



Jeep Grand Cherokee WL and L Overland & Trailhawk (incl. 4xe) 2022-on Recovery Points

IMPORTANT! – READ BEFORE INSTALLATION

- This product must be installed exactly as per these instructions using only hardware supplied.
- Take a few moments to read instructions thoroughly before beginning work.
- In the event of damage to any bar component please contact OFFROAD ANIMAL to arrange repair/replacement of components.
- Do not use this product for any vehicle make or model other than that specified on these instructions.
- Do not remove labels from this product.
- This product and its fixings must not be modified in any way unless stated in these fitting instructions.
- The installation of this product is recommended for trained personnel.
- These instructions are correct at time of publication. OFFROAD ANIMAL cannot be held responsible for the impact of any changes subsequently made by the vehicle manufacturer. If you find something has changed please contact us to let us know!
- During installation it is the duty of the installer to check correct operation/clearances of all components.
- If Instructions are to be printed for reference in the workshop, it is recommended that they are printed in colour, for best legibility.

GENERAL CARE AND MAINTENANCE

Only wash the product with a PH neutral car wash to prevent paint damage and discolouration.

Plastic parts may be maintained with silicone spray.

Do not use acidic or alkaline based cleaning products.

It is important to perform regular checks (pre trip or on an annual basis) on the installed product. Checks include:

- Visual inspection for damage (eg. cracks, chips, dents etc.)
- Electrical wiring is not rubbing anything or worn out
- Bolts are torqued to correct specification (see torque guide below)

For touching up small stone chips, Offroad Animal recommends the following paint products:

- Dupli-Color Trim & Bumper Paint Black (TB101)
- VHT Hood, Bumper & Trim Paint Black (SP27)

BOLT TORQUE SETTINGS

Use the following bolt torques on all fasteners, unless otherwise specified.

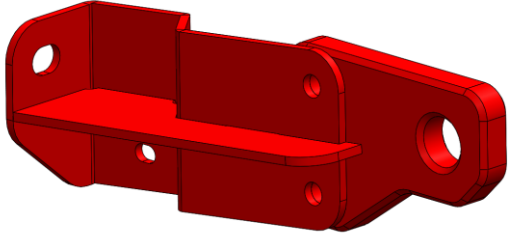
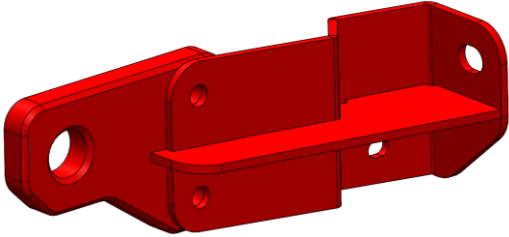
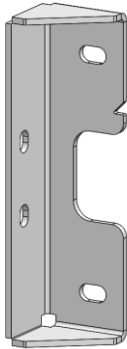
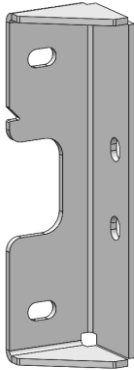
Always use a torque wrench to set correct torque settings. Ensure torque wrench is set to Nm unit of measurement. Otherwise perform conversion to lb-ft.



| Size | Torque Nm |
|------|-----------|
| M5 | 5 Nm |
| M6 | 9 Nm |
| M8 | 22 Nm |
| M10 | 44 Nm |
| M12 | 77 Nm |

PARTS LISTING

IMPORTANT: Check all parts are present before beginning work! Contact OFFROAD ANIMAL if something is missing.

Main Parts – In the Box

| Qty | Part Number | Description | Image |
|-----|--------------------|-----------------------------|---|
| 1 | RP-JGC-WL-22-ASM1R | WL Tow Hook Welded Assy RH |  |
| 1 | RP-JGC-WL-22-ASM1L | WL Tow Hook Welded Assy LH |  |
| 1 | B-0897R | WL Tow Hook Support Bracket |  |
| 1 | B-0897L | WL Tow Hook Support Bracket |  |

| | | | |
|----------|--------|---|---|
| 1 | B-0898 | WL 4xe Pedestrian Speaker Bracket |  |
| 2 | P-0282 | WL Predator Front Mount Chassis Brace Backing Plate |  |
| 2 | T-0063 | WL Predator Crush Tube 122mm |  |

Small Parts – Contained in Small Parts Kit Bag

| Qty | Part Number | Description |
|----------|--------------------|--|
| 2 | NP-COM-M8-200-ASM0 | M8 Nut Plate 200mm |
| 2 | M5 X 20 HEX | M5X20 HEX BOLT, ZP, 8.8 |
| 2 | M5 Flat washer | M5 FW |
| 2 | M5 FLANGE NUT | Flange Nut, M5x0.8 G8.8 ZP |
| 2 | M8 X 40 HEX | Bolt Hex, M8X40X1.25, GR8.8 ZP |
| 2 | M8 HD FLAT WASHER | M8 FLAT WASHER - High Tensile 19x8x1.9mm |
| 4 | M12X55 | Bolt Hex, M12X55x1.75, GR8.8 ZP |
| 4 | M12 FLAT WASHER | M12 FW |
| 4 | M12 FLANGE NUT | Flange Nut, M12x1.75 G8.8 ZP |
| 2 | M14X150 GR10.9 | Bolt Hex, M14X150x2.0, GR10.9 ZP |
| 2 | M14 FW LHD | WASHER, FLAT M14X30X3.8 ZP |
| 2 | M14 FLANGE NUT | Flange Nut, M14x2.0 G8.8 ZP |

TOOLS REQUIRED

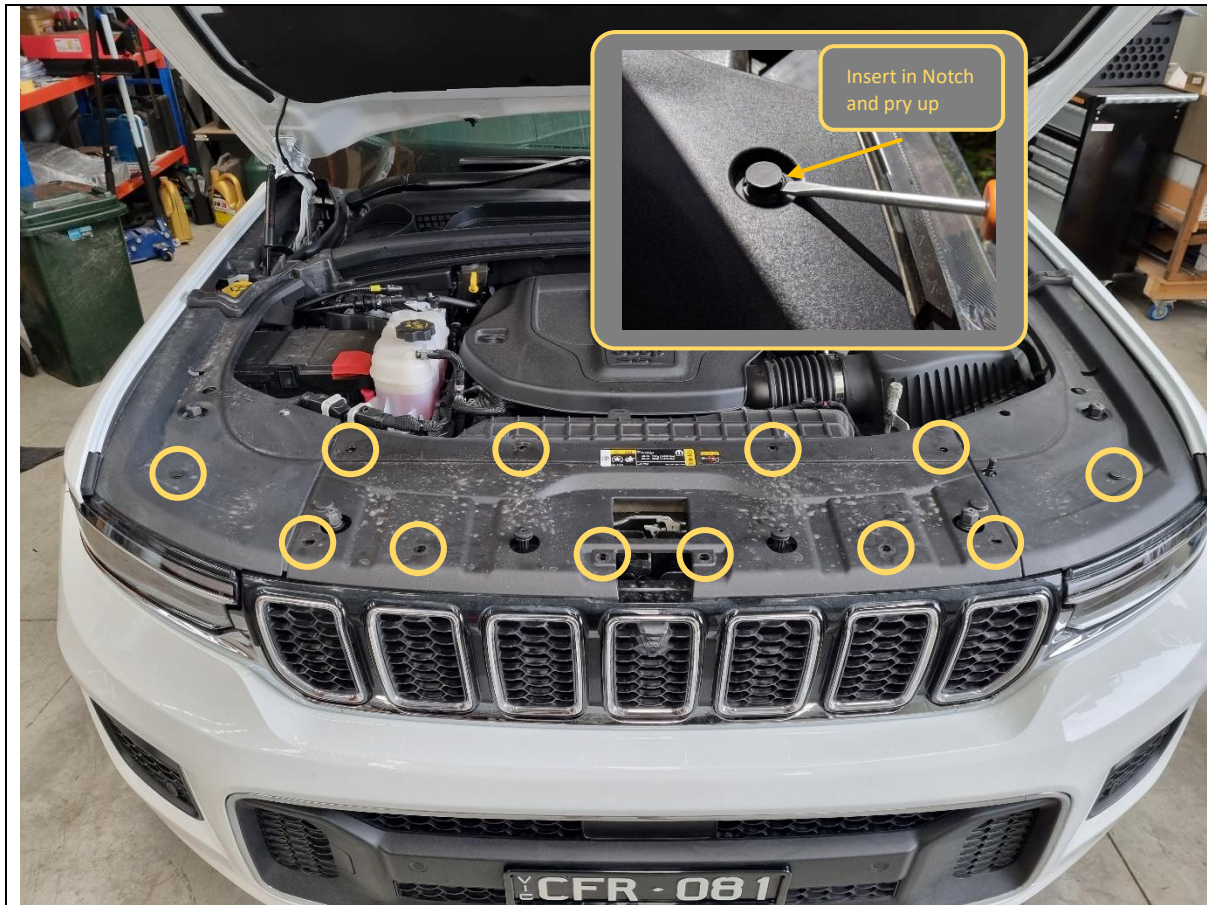
The following tools will be required to install the product.

| Hand Tools | Power Tools | Workshop Equipment |
|---------------------------|---|--------------------|
| Metric Socket Set 8-22mm | Electric/Air Impact Driver (Optional) | Rag |
| Socket Extension Bar | Angle Grinder | Masking Tape |
| Metric Spanner Set 8-22mm | Air Hacksaw or Oscillating Multi Tool or Jigsaw | Marker Pen |
| Torx Key Set | Corded/cordless Drill | Black Paint |
| Flat blade screwdriver | | |
| Trim tool | | |
| Deburring tool | | |
| Utility knife | | |
| Adjustable wrench (large) | | |
| 8mm Drill bit | | |

WORKSHOP SAFETY

It is the responsibility of the installer to always complete works in a safe manner. Make sure the following safety equipment is available and precautions are observed whilst fitting this product.

| | |
|---|--|
| <p>Hearing Protection</p>  | <p>Always wear ear protection when using power tools.</p> |
| <p>Eye Protection</p>  | <p>Ensure eye protection is always worn when cutting or drilling.</p> |
| <p>Manual Handling</p>  | <p>Do not attempt to lift bar assemblies or rock sliders on your own.</p> <p>Always use two people to lift or use mechanical Lifting aid such as hydraulic lifting trolley.</p> |
| <p>Vehicle Support</p>  | <p>Always ensure vehicle is properly supported when working on it. Do not attempt to fit products whilst suspension work is being carried out. Do not work under a vehicle supported only by a jack.</p> |



This product is designed to work in conjunction with the Offroad Animal Pre Runner, Hidden Winch Mount and Nudge Bar.

Please read and familiarise yourself with ALL fitting instructions for the products you are installing prior to commencing.

1. Open the bonnet.
2. Remove 12x plastic push rivets by levering center section upwards using flat bladed screwdriver or trim tool, as shown.
3. Lift and remove the radiator cover.

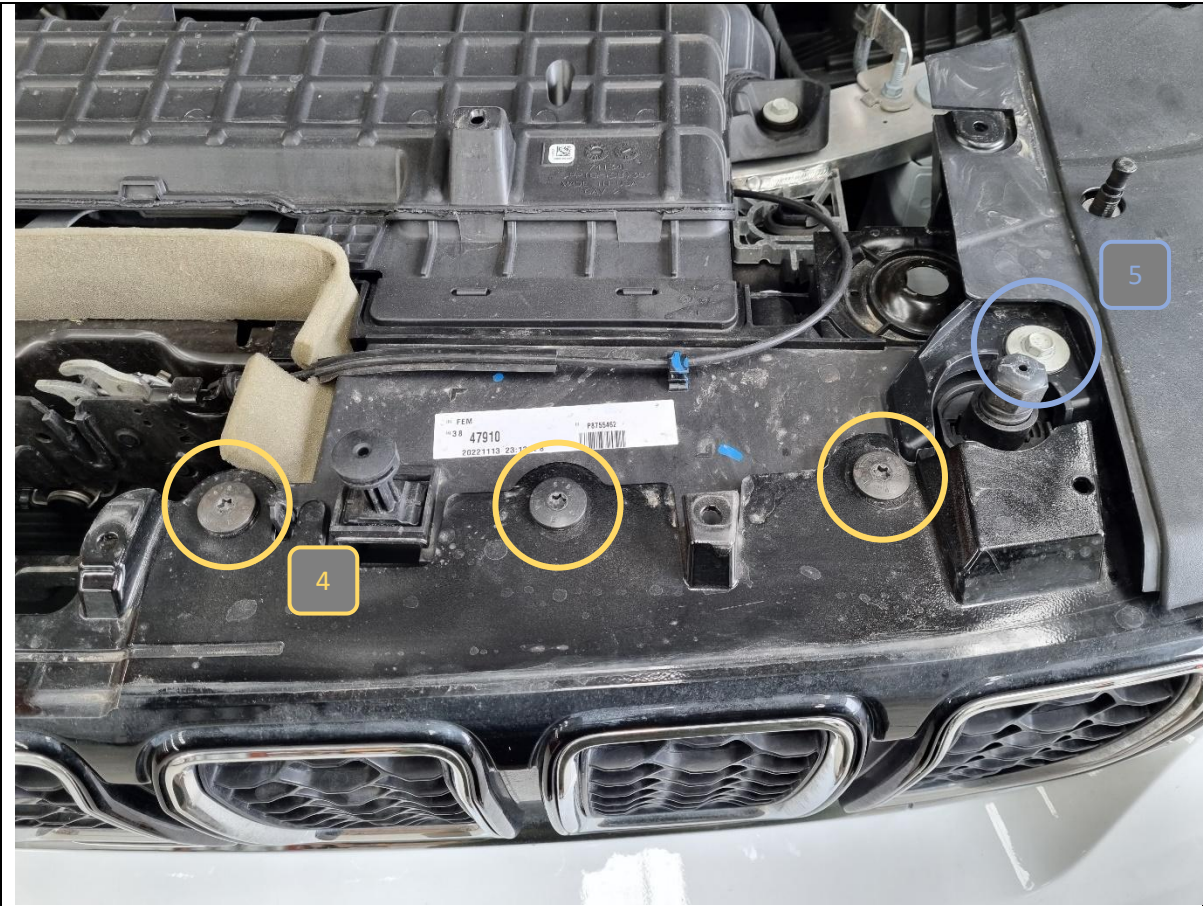
TOOLS REQUIRED

Flat Blade Screwdriver
or
Trim Tool

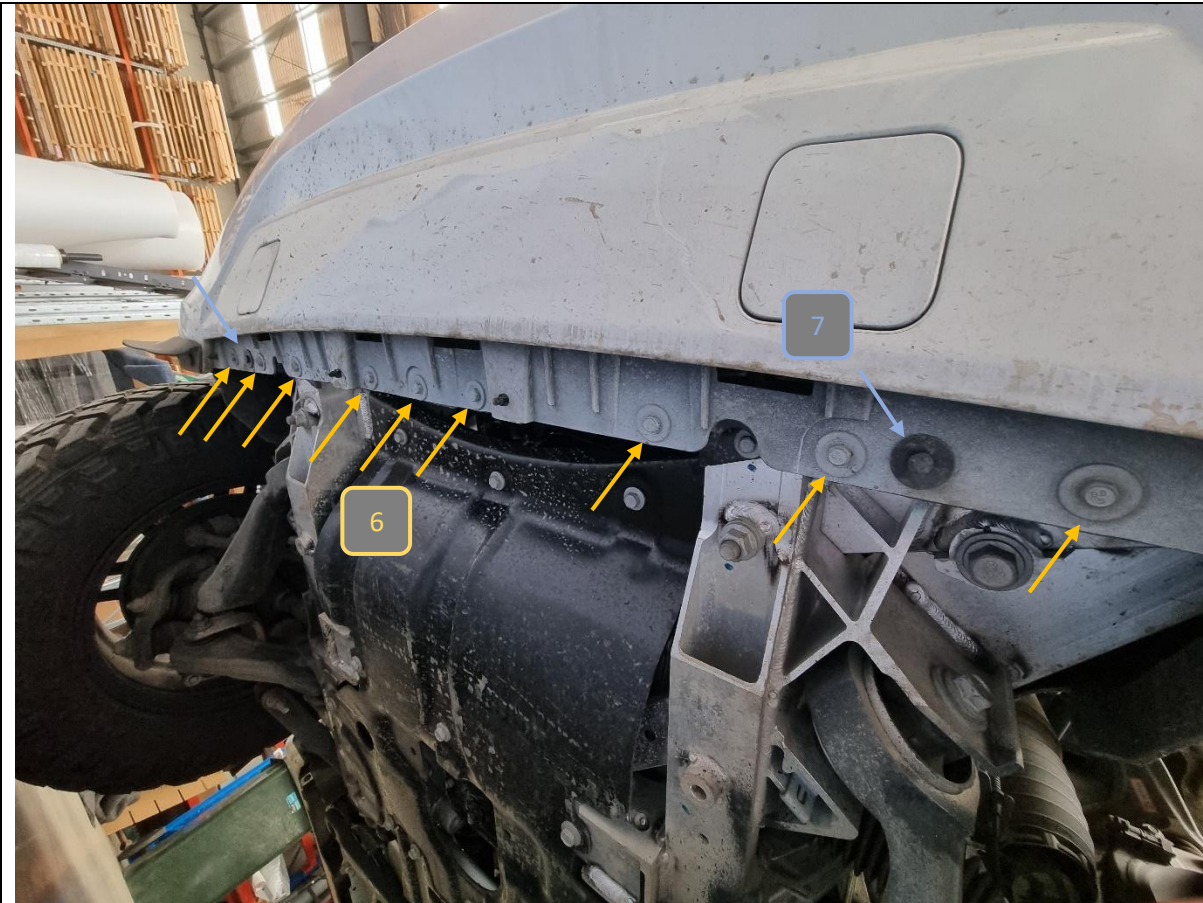
FASTENERS

12x Plastic Push Rivets

Retain for Reassembly



| | |
|---|---|
| <div>4. Remove 6x T40 Torx screws from the top of the grille.</div> <div>5. Remove 2x 10mm hex head bolts from the top of the grille.</div> | <div>TOOLS REQUIRED</div> <div>T40 Torx driver</div> <div>10mm socket/spanner</div> |
| | <div>FASTENERS</div> <div>6x T40 Torx screws</div> <div>2x 10mm hex head bolts</div> <div>Retain for Reassembly</div> |



| | |
|---|---|
| <div>6. Remove 9x 10mm hex head bolts from the bottom of the bumper.</div> <div>7. Remove 2x plastic push rivets from the bottom of the bumper.</div> <div>Please note the bolt arrangement on the Trailhawk may be different to the Overland shown. In any case, remove all fasteners on the bottom of the bumper.</div> | <div>TOOLS REQUIRED</div> <div>10mm socket/spanner</div> <div>Flat Blade Screwdriver or Trim Tool</div> |
| | <div>FASTENERS</div> <div>9x 10mm hex head bolts</div> <div>2x Plastic Push Rivets</div> <div>Retain for Reassembly</div> |



8. On each side, remove 5x 8mm hex head screws securing the wheel arch liner to the bumper.

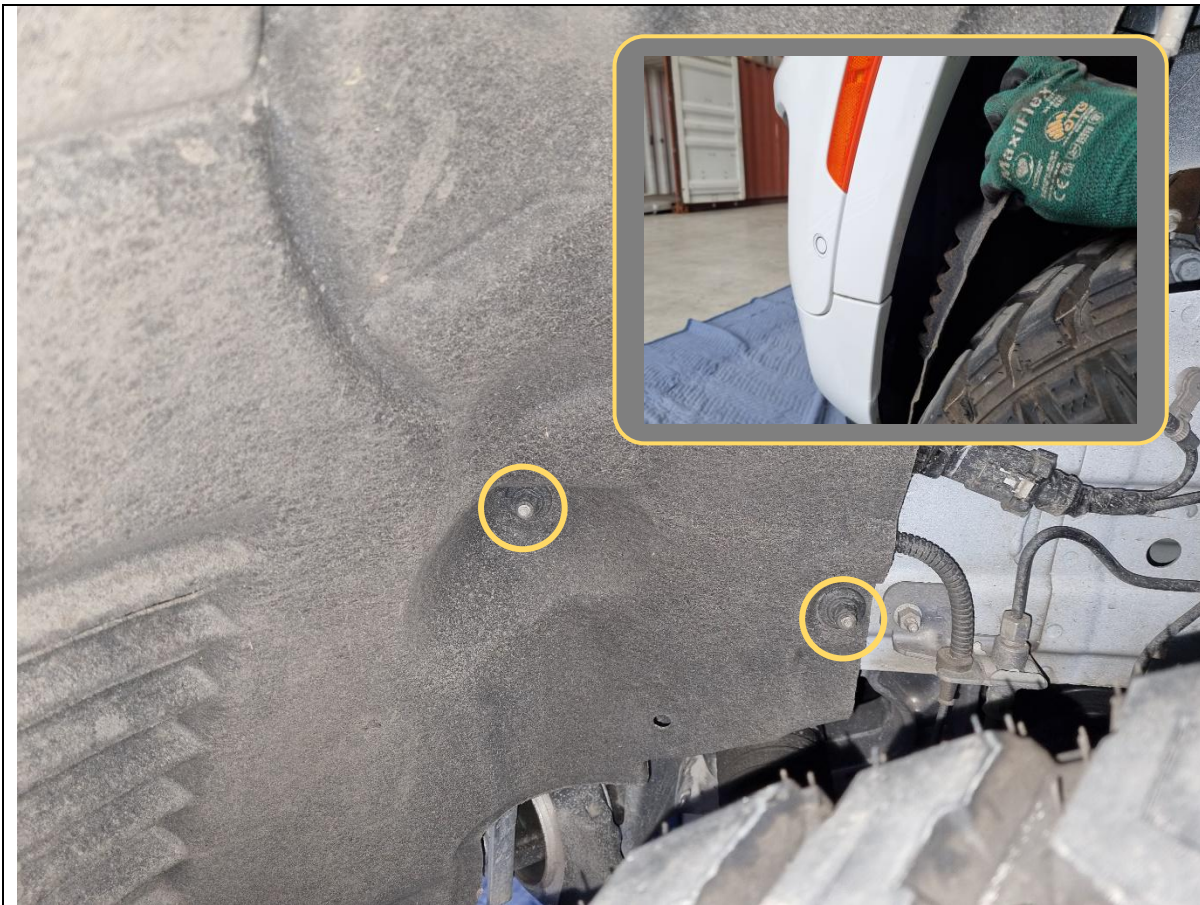
TOOLS REQUIRED

8mm socket/spanner
or
Phillips Head screwdriver

FASTENERS

5x 10mm hex head bolts

Retain for Reassembly



9. Remove at least 3x of the black plastic nuts securing the wheel arch liner to the body using a 10/11mm socket.
10. Pull down on the front half of the wheel arch liner to expose the inside of the bumper.

Note: Fully removing the wheel arch liner will make it easier for fitment later but is not mandatory.

TOOLS REQUIRED

10/11mm socket

FASTENERS

Plastic nuts

Retain for Reassembly



11. Pull and release the clips retaining the flare to the bumper + quarter panel.

It is easiest to insert an 8mm socket on the inside and push the trim clips outwards (see inset photos).

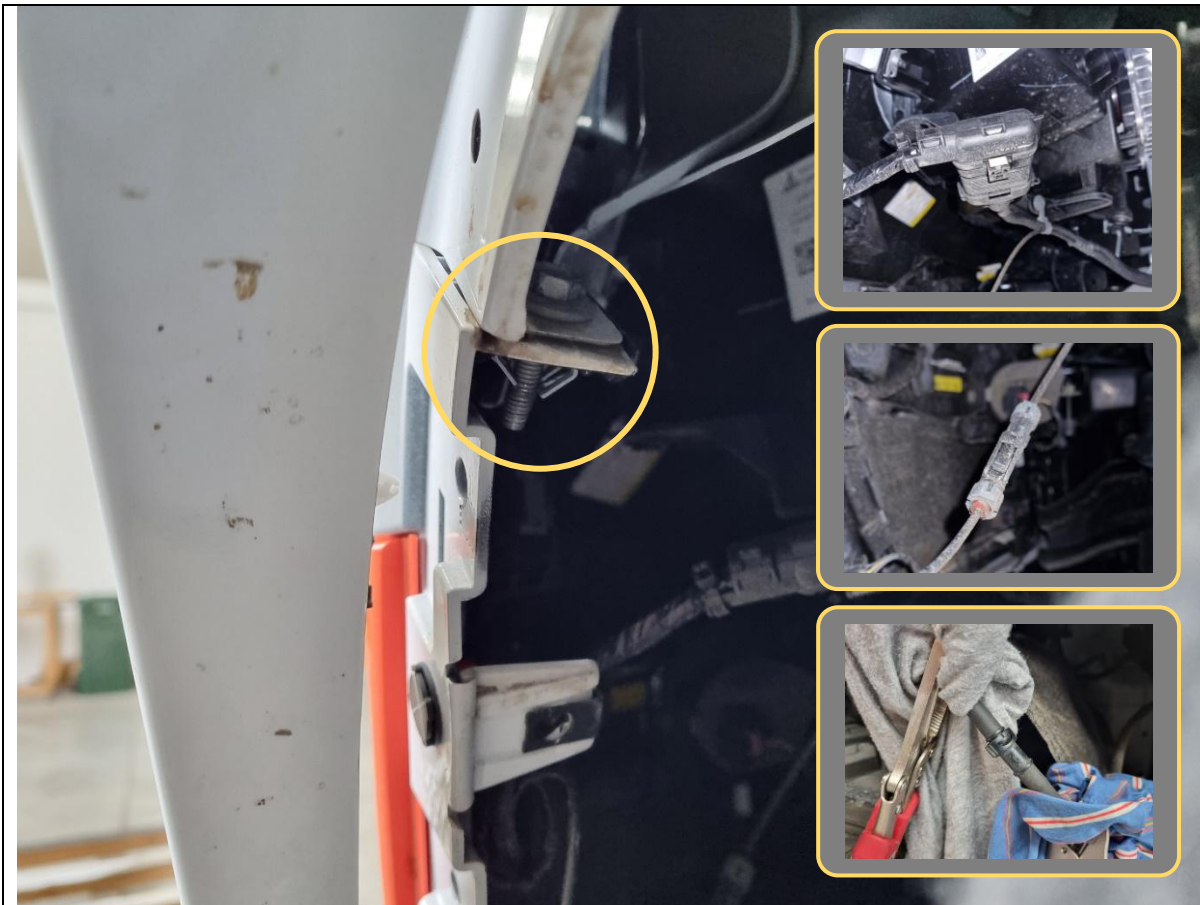
12. Use a rag to protect the flare and to prevent it from flapping around.

TOOLS REQUIRED

8mm socket (optional)

Rag

FASTENERS



13. On both sides, remove the 10mm hex head bolt securing the bumper to the quarter panel.

14. Disconnect sensor looms, camera loom and washer hoses on both sides of the bumper (see inset photos).

There should be 1x sensor loom plug each side, a camera loom plug on the LH, and washer hose on the RH.

TOOLS REQUIRED

10mm socket

FASTENERS

2x 10mm hex head bolts

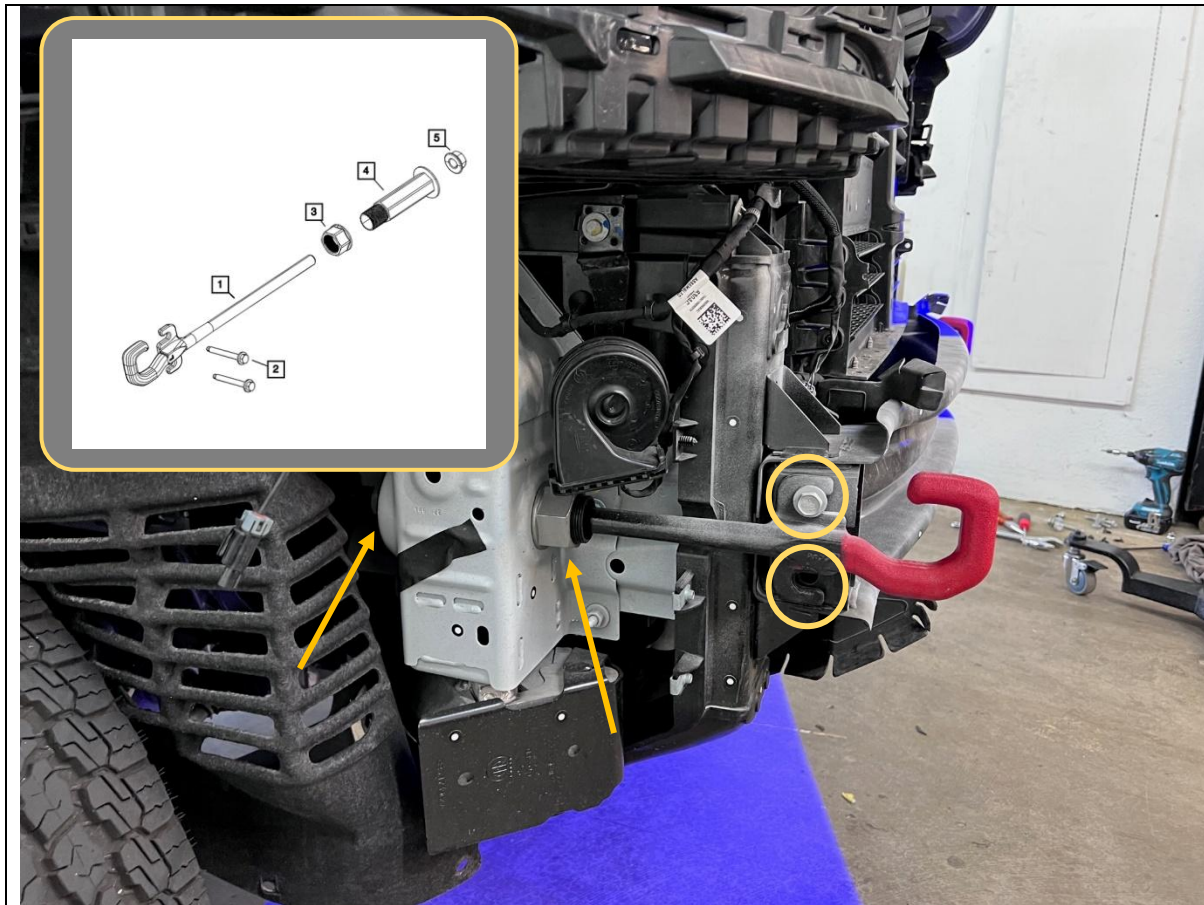
Retain for Reassembly



| | |
|--|------------------------------|
| <p>15. If headlight washers are equipped, pull out the plastic cover cap and unclip it from the plastic washer stem.</p> | <p>TOOLS REQUIRED</p> |
| | <p>FASTENERS</p> |



| | |
|---|------------------------------|
| <p>16. Remove the bumper by releasing the clips on either side and lifting the top flap of the grille over the bonnet rubber stops.</p> | <p>TOOLS REQUIRED</p> |
| | <p>FASTENERS</p> |



17. If factory tow hooks are equipped, remove them by undoing the 2x 16mm hex head bolts on each side, then remove the large nuts with a large adjustable wrench (see inset for Jeep parts breakdown).

TOOLS REQUIRED

16mm socket/spanner

Adjustable wrench

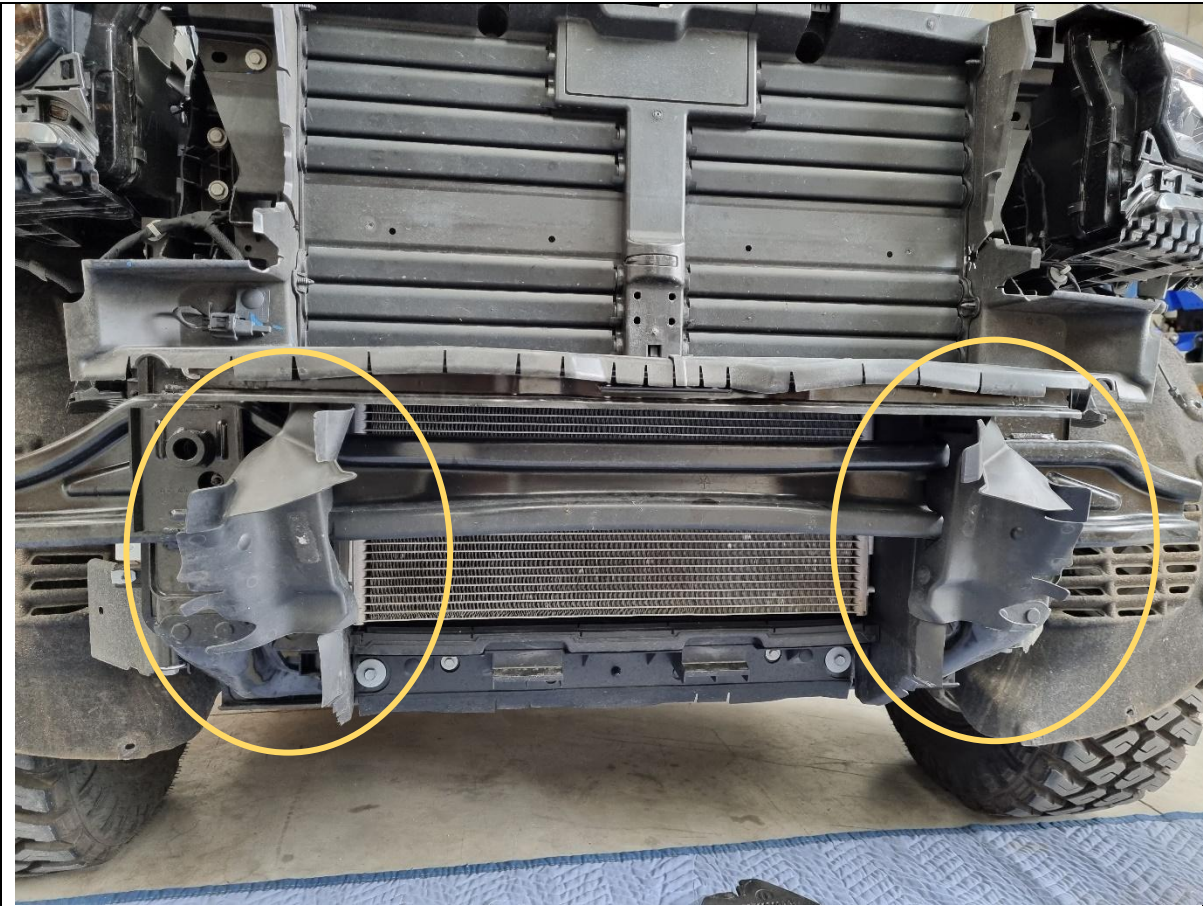
FASTENERS

4x 16mm hex bolts

Retain for reassembly



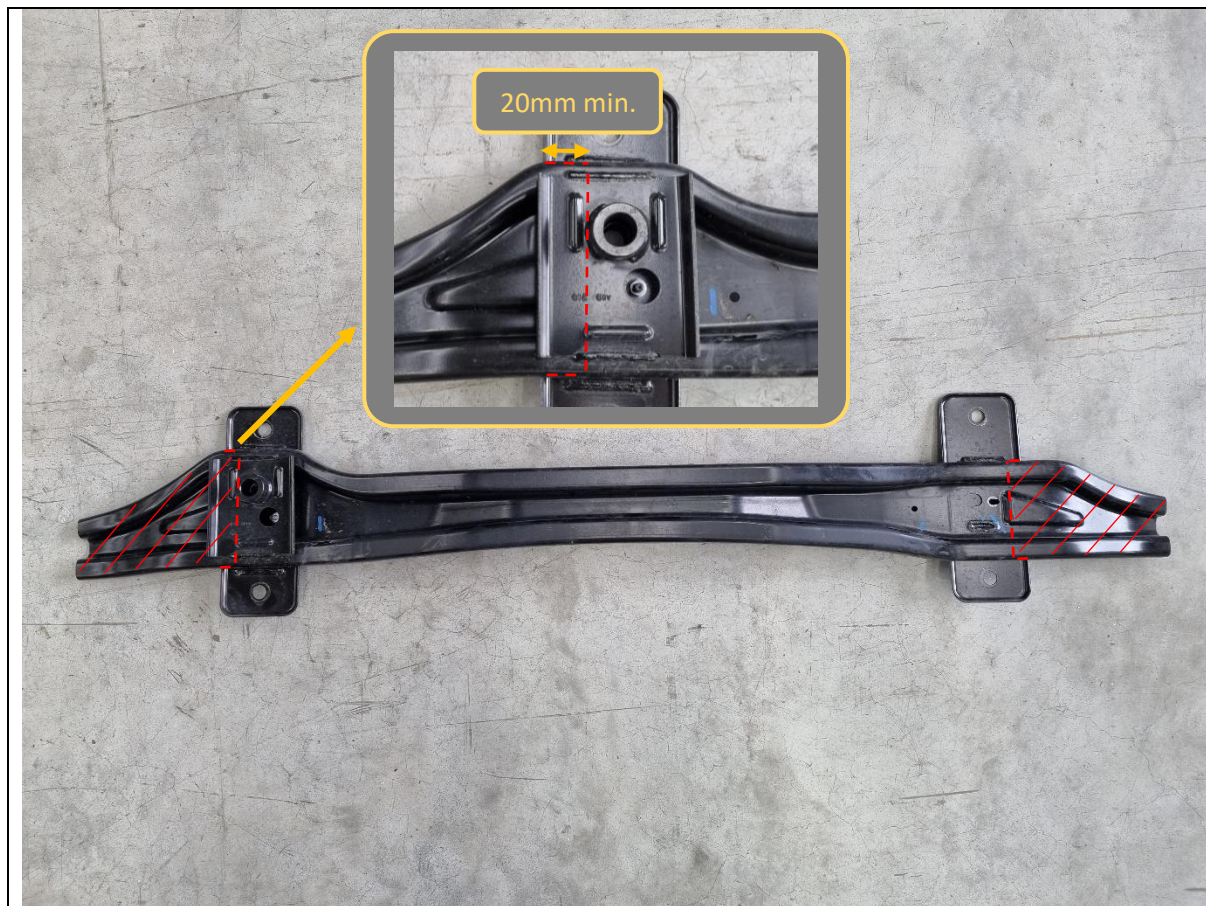
| | |
|---|------------------------------|
| <p>18. For vehicles with the same impact beam shape as the image above (i.e. vehicles equipped with factory tow hooks) and are not fitting an Offroad Animal Hidden Winch Mount, skip to Step 25.</p> | <p>TOOLS REQUIRED</p> |
| | <p>FASTENERS</p> |



| | |
|--|--|
| 19. Unclip and remove the air dams with a flat head screwdriver or trim tool. Retain for reassembly. | TOOLS REQUIRED Flat Blade Screwdriver or Trim Tool |
| | FASTENERS |



| | |
|--|------------------------|
| 20. Using a 16mm socket or spanner, remove the 4x hex head bolts securing the impact beam to the body. | TOOLS REQUIRED |
| | 16mm socket/spanner |
| | FASTENERS |
| | 4x 16mm hex head bolts |
| | Retain for reassembly |



21. If fitting an Offroad Animal Hidden Winch Mount, skip to step 25.

22. The stock impact beam needs to be cut to fit with the recovery points.

Mark out the area shown in the images above, then cut off with an angle grinder.

TOOLS REQUIRED

Angle Grinder

Marker pen
or
Masking tape

FASTENERS



23. Remove burrs with a deburring tool.

24. Paint over cut area to prevent rust.

TOOLS REQUIRED

Deburring tool

Black paint

FASTENERS



25. For 4xe vehicles, unplug and remove the pedestrian alert speaker on the RHS behind where the impact beam using a T35 Torx bit. Set aside for later.

26. On all vehicles, cut off the top plastic mounting tab using a utility knife.

If you have a factory tow hook style impact beam or are fitting an Offroad Animal Hidden Winch Mount, skip to Step 29.

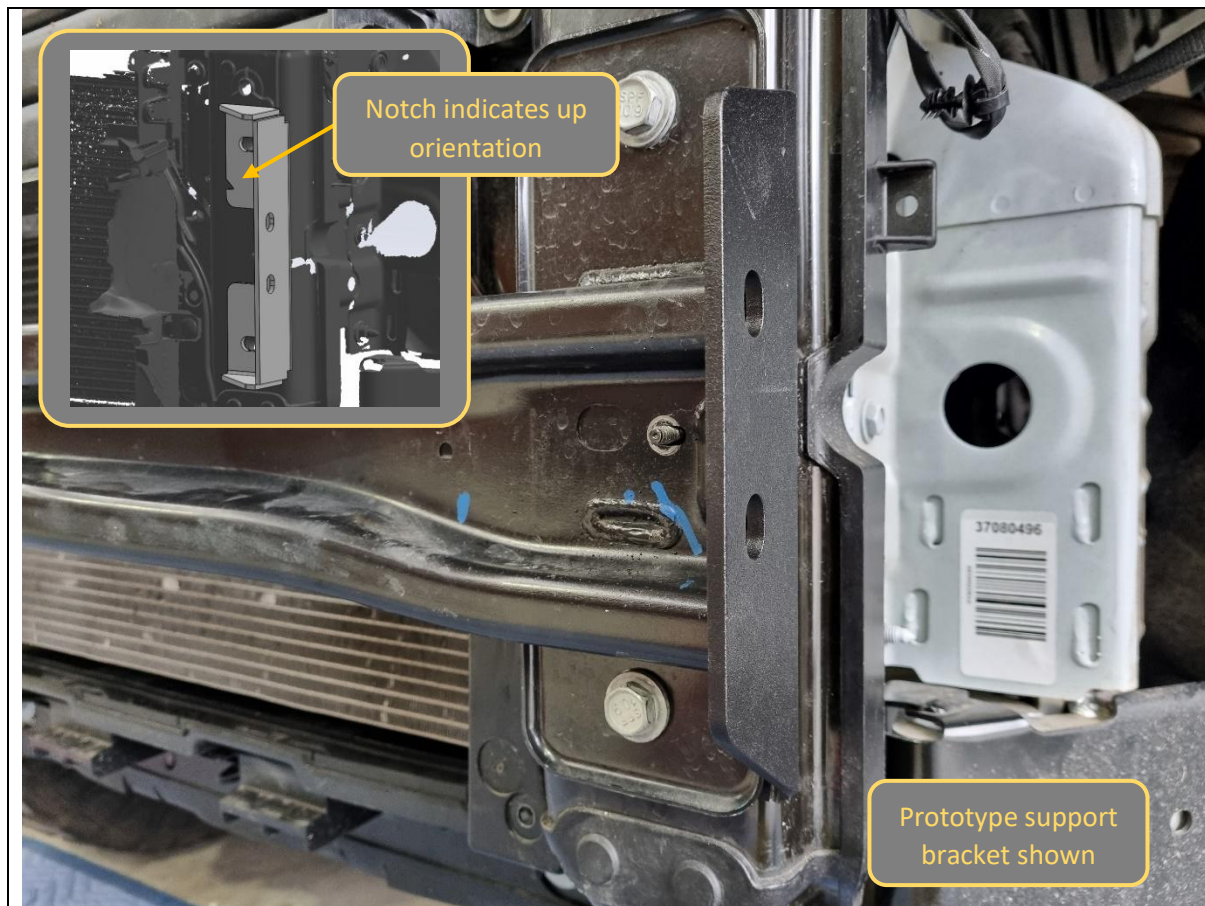
TOOLS REQUIRED

T35 Torx driver

Utility knife

FASTENERS

2x T35 Torx screws



27. Re-fit the cut impact beam to the chassis with the Tow Hook Support Bracket sandwiched in between. Re-use the factor fasteners.

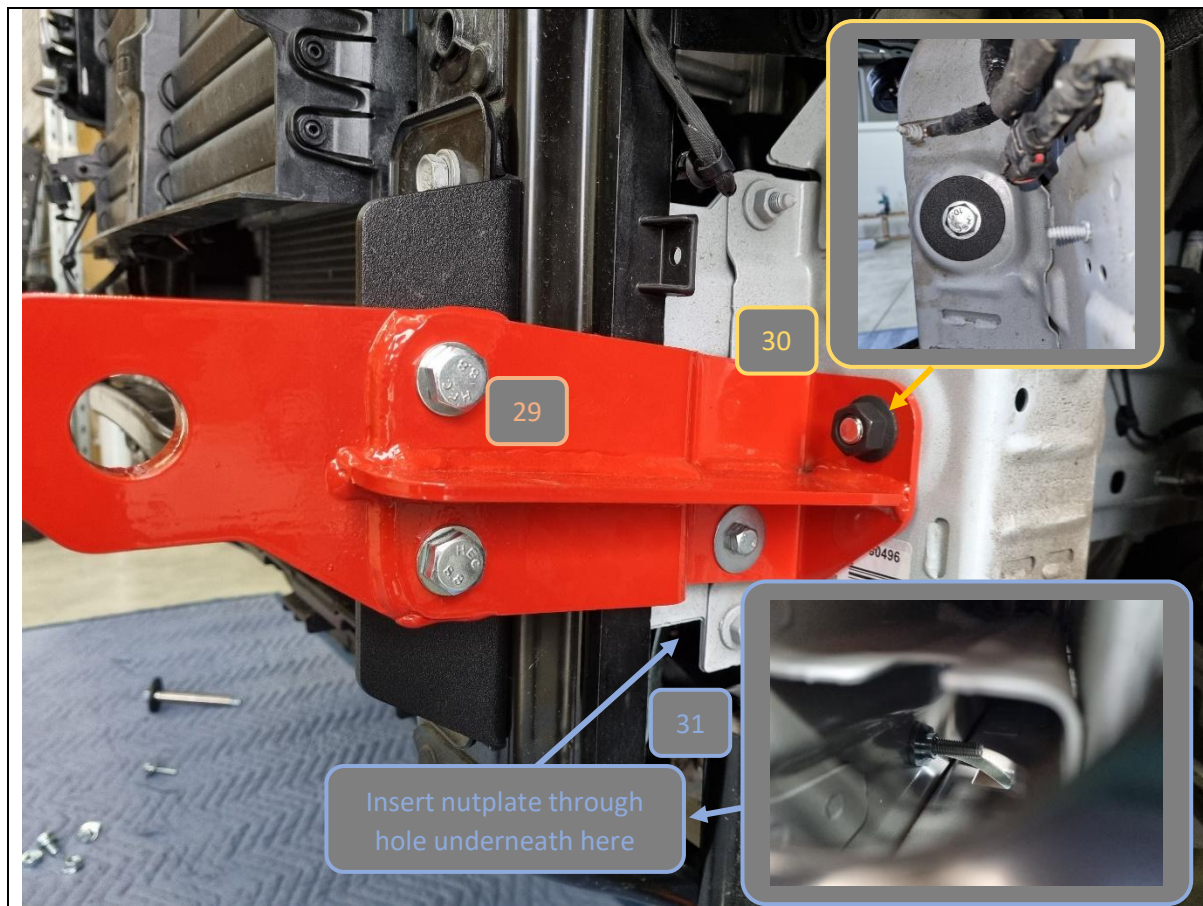
28. Re-fit the plastic air dams.

TOOLS REQUIRED

16mm socket/spanner

FASTENERS

4x 16mm hex head bolts



29. Loosely secure the recovery point to the Tow Hook Support Bracket with 2x M12x55mm hex bolts, flat washers and flange nuts.

If fitting the Offroad Animal Pre Runner and/or Nudge Bar, now is also the time to fit the mounting brackets through the same holes. Refer to fitting instructions for those respective products for details.

30. Loosely secure the rear of the recovery point to the large hole in the frame using 1x M14x150mm hex bolt, flat washer, round backing plate, 122mm crush tube and flange nut.
31. Feed 1x M8 lollipop nutplate through the rectangular hole (see inset) and secure with 1x M8x40 hex head bolt and large flat washer.
32. Align the recovery point so that the top face is parallel to the ground and tighten all bolts.
33. Repeat for other side.

TOOLS REQUIRED

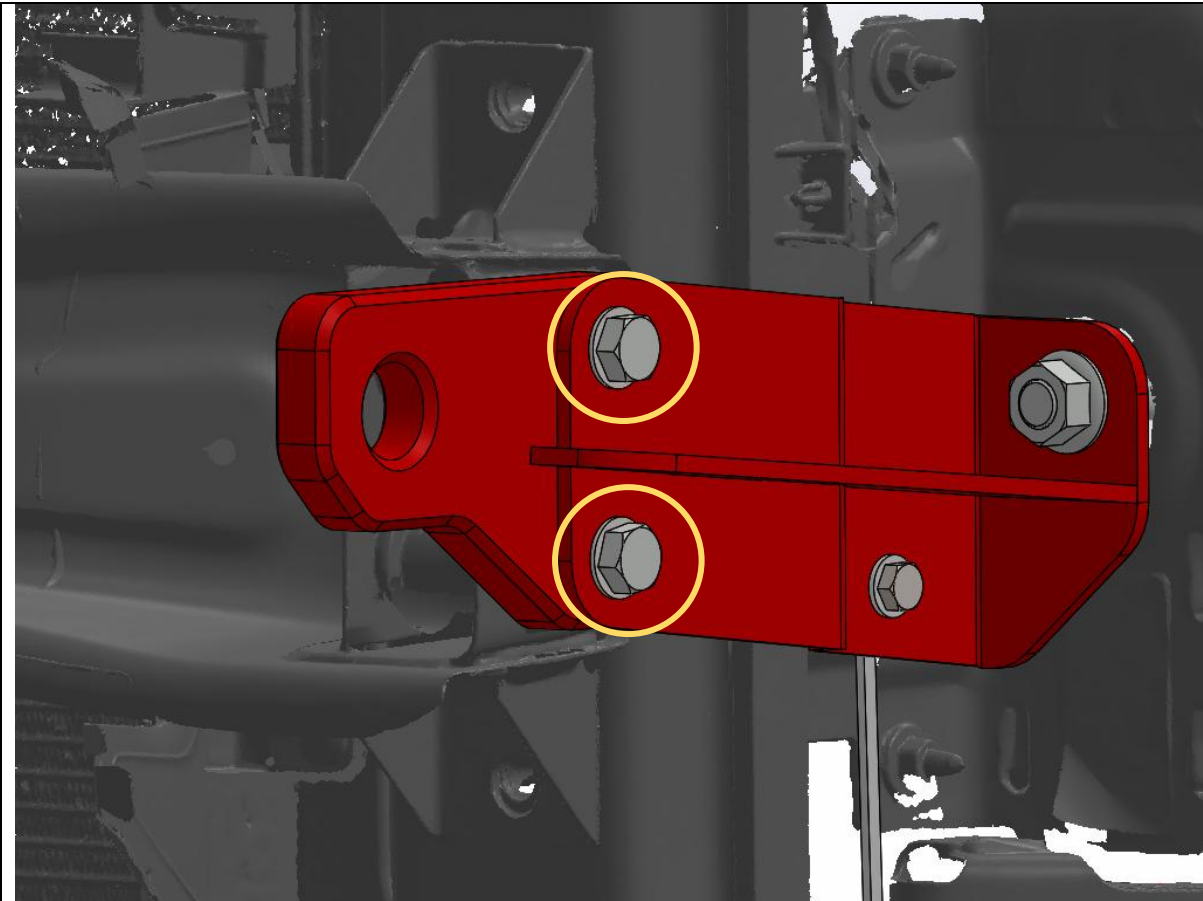
13mm socket/spanner
18/19mm socket/spanner
22mm socket/spanner

FASTENERS

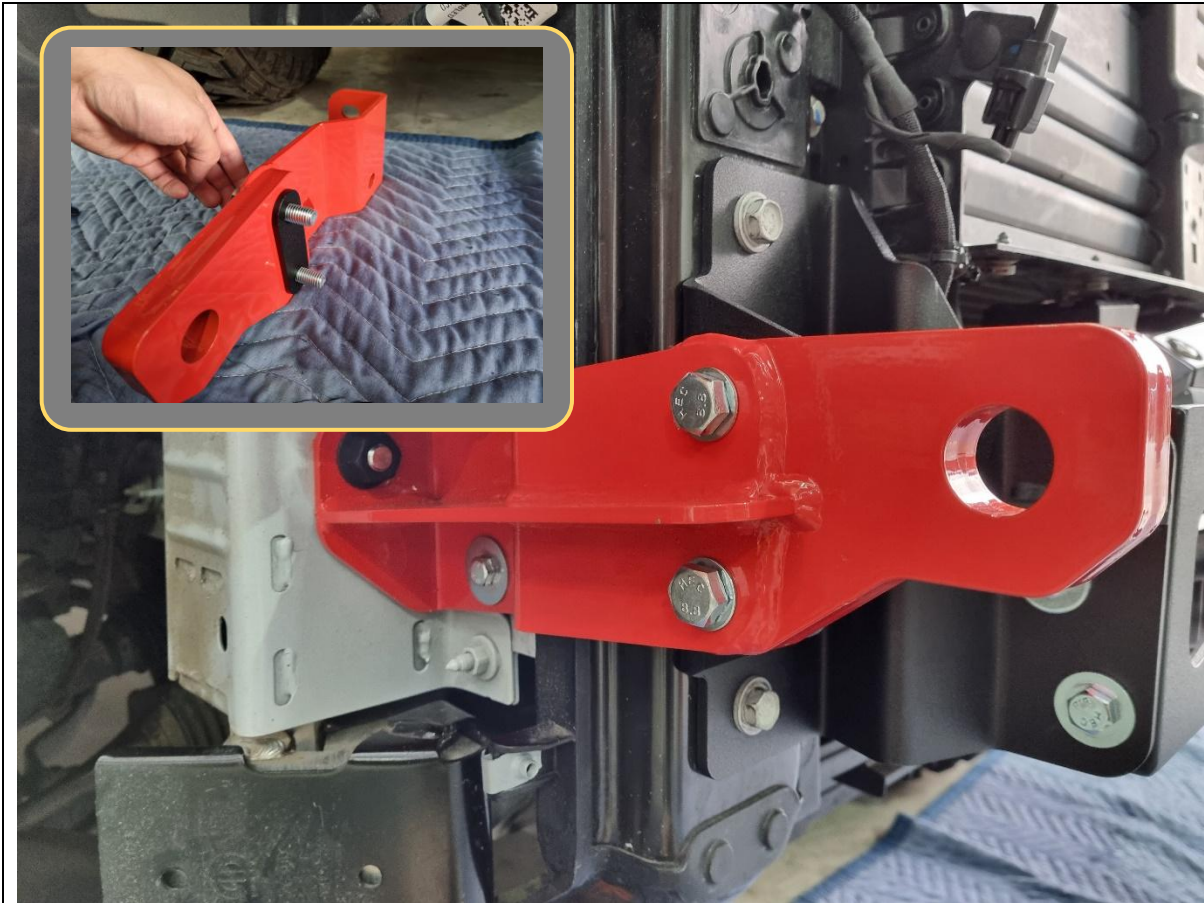
4x M12x55 hex head bolt
4x M12 flat washer
4x M12 flange nut

2x M14x150 hex head bolt
2x M14 flat washer
2x P-0282 backing plate
2x T-0063 122mm crush tube
2x M14 flange nut

2x M8x40 hex head bolt
2x M8 large flat washer
2x M8 lollipop nutplate



| | |
|--|---|
| <p>34. If your vehicle had an impact beam that did not require cutting, fit the recovery point to the impact beam with the factory tow hook fasteners.</p> | <p>TOOLS REQUIRED</p> <p>16mm socket/spanner</p> |
| | <p>FASTENERS</p> <p>4x 16mm hex bolts</p> |

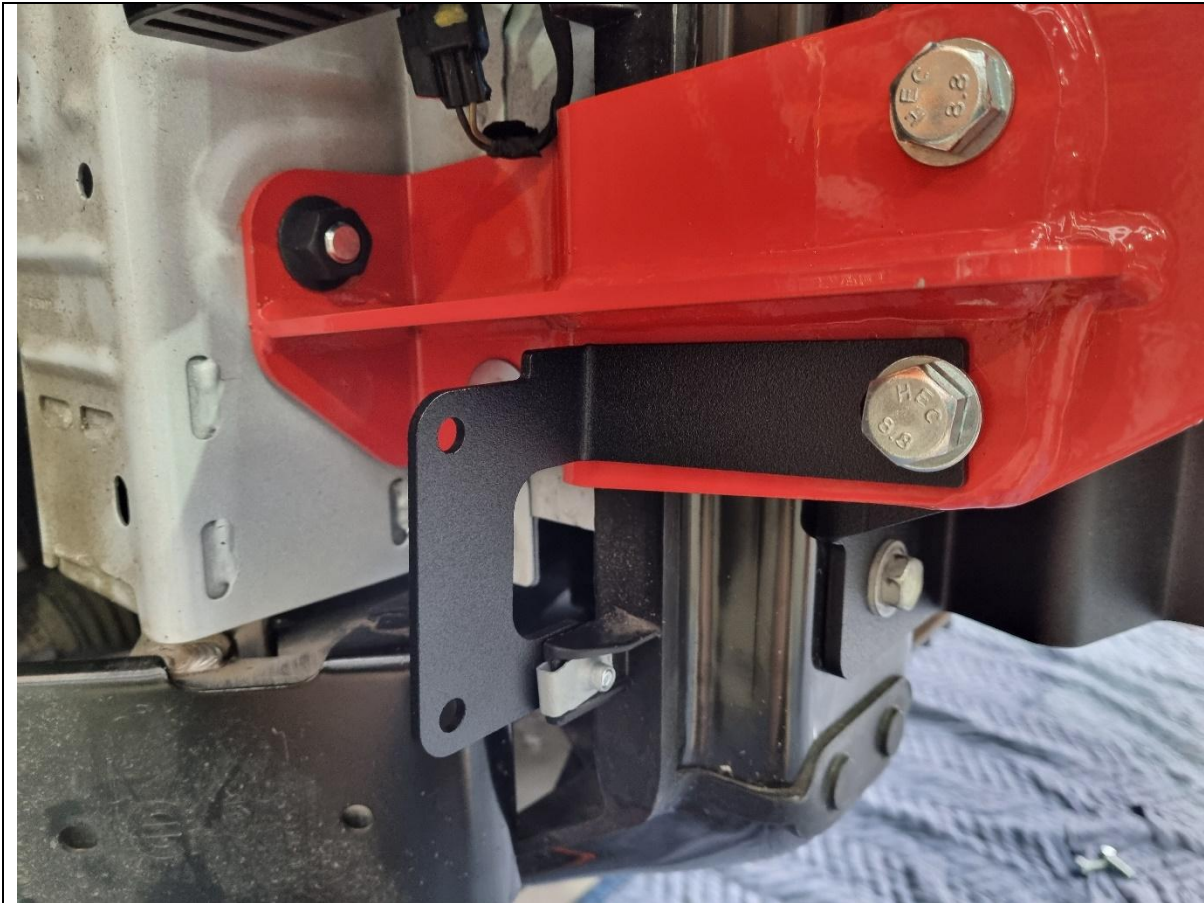


35. If fitting recovery points with Offroad Animal Hidden Winch, fit the recovery point to the hidden winch chassis mount with a P-0288 spacer plate (supplied with Hidden Winch kit, see inset) and the same M12x55 fasteners from Step 29.

Note: Spacer plate not required when fitting with Offroad Animal Pre Runner.

TOOLS REQUIRED**FASTENERS**

P-0288 (supplied with hidden winch)



36. For 4xe owners, fit the supplied 4xe pedestrian alert speaker relocation bracket on the outside of the RHS recovery point and re-fit the speaker using the supplied M5 fasteners.

TOOLS REQUIRED

8mm socket/spanner

T35 Torx driver

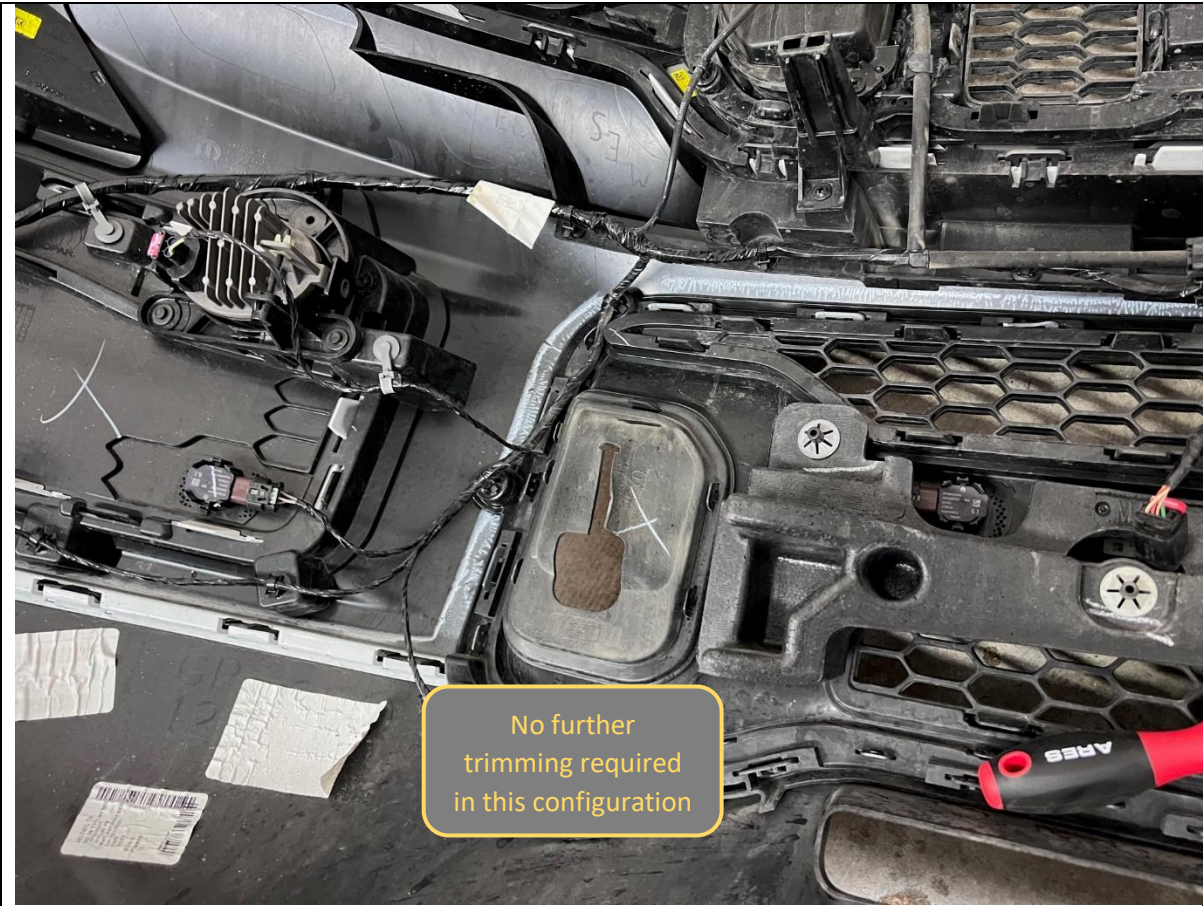
FASTENERS

2x M5x20 hex head bolt

2x M5 flat washer

2x M5 flange nut

1x T35 Torx screw



| | |
|--|-----------------------|
| <p>37. If your bumper has pre existing slots for the factory tow hooks, and no further accessories are to be fitted (eg. Offroad Animal Hidden Winch, Pre Runner or Nudge Bar), re-fit the bumper to the vehicle and you are finished.</p> <p>38. If there are no cutouts in the the stock bumper, you will need to be follow the steps below.</p> | TOOLS REQUIRED |
| | FASTENERS |



39. Download the WL Recovery Point Bumper Cut Template from the Offroad Animal website.

For AU:

<https://offroadanimal.com.au/recovery-points-tow-hooks-to-suit-grand-cherokee-l-and-wl-2022-on-overland-trim/>

For USA:

<https://offroadanimal.com/recovery-points-tow-hooks-to-suit-grand-cherokee-l-and-wl-2022-on-overland-trim-set-of-2/>

40. Print out at 100% scale on A4 (check dimensions after printing), cut and position the bumper cut template onto the inside of the bumper where the recovery points will go through.

TOOLS REQUIRED

Scissors

Masking tape

FASTENERS



| | |
|--|---|
| <div>41. Mark and trace the shape of the rectangular cutout with a marker pen.</div> <div>42. Drill pilot holes on each corner with an 8mm drill bit as shown.</div> | <div>TOOLS REQUIRED</div> <div>Marker pen</div> <div>8mm drill bit</div> <div>Corded/cordless Drill</div> |
| | <div>FASTENERS</div> |



43. Using a jigsaw or similar tool, cut the bumper along the marked lines.

Ensure no electrical looms in the bumper will get snagged while cutting. Unclip and move out of the way if required.

44. If fitting the Offroad Animal Hidden Winch, Pre Runner or Nudge Bar, also perform those bumper cuts now. Refer to their respective fitting instructions for details.

TOOLS REQUIRED

Jigsaw
or
Air hacksaw
or
similar

FASTENERS



| | |
|--|-----------------------|
| <div>45. Re-fit the trimmed bumper back onto the vehicle. Reconnect all looms and washer hose lines.</div> <div>46. Re-fit flares, inner wheel guards and radiator covers in reverse order to disassembly.</div> | TOOLS REQUIRED |
| | FASTENERS |



47. These recovery points are designed to be used with soft shackles only. You may attempt to use bow shackles, but larger cuts to the bumper are required to be able to fit them.
48. It is always recommended to use an equalizing strap and pull from both LH and RH tow points at the same time.

TOOLS REQUIRED**FASTENERS**



Congratulations! You're done! Head for the tracks and enjoy the ability to get out of tricky situations.

Why not complete the tough look of the Grand Cherokee with the Offroad Animal Pre Runner, Hidden Winch Mount and Nudge Bar?